

Shipping Intelligence Network

Shipping Intelligence Network provides online access to over 100,000 pages of data — a source of information about the shipping industry whose range and depth is unsurpassed.

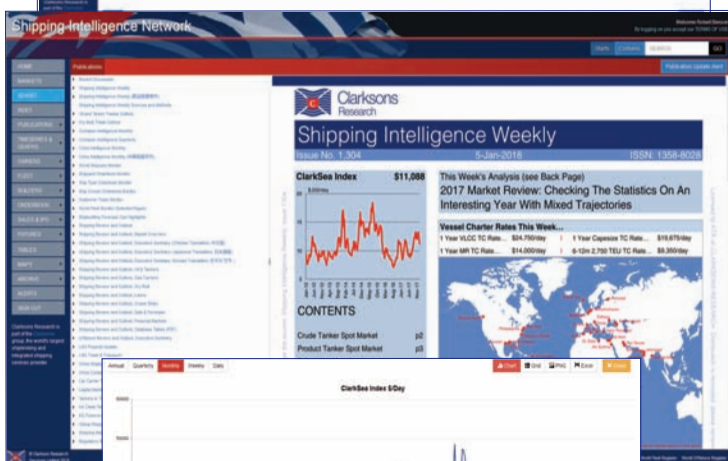
Shipping Intelligence Network contains the comprehensive range of data collected and published by Clarksons Research, including the latest information on the shipping markets at glance, easily downloadable versions of its wide range of market reports, extensive fleet and orderbook listings, and thousands of time-series and graphs of key commercial information.

A clear and easy to use format, combined with the latest data and technology, provides a fast and efficient tool for the whole of the maritime industry.

Data available stretches to thousands of time-series and tables each regularly updated and readily downloadable into Excel spreadsheet format. Associated graphs can be cut and pasted into documents and presentations.

In order to discover the power and range of data available on Shipping Intelligence Network, visit www.clarksons.net and follow the instructions. Getting the information you want on the shipping industry has never been easier.

Over
13,000
Time-Series



What you can expect from Shipping Intelligence Network...

Shipping Markets

- Markets: latest indicators at a glance, reports on 20+ market sectors, including tankers, bulkers, containers, gas, chemical, short sea, newbuilding, sale and purchase, demolition, bunkers; updated regularly with associated graphs.
- Features: latest articles from Clarksons Research publications.
- Fleet news: sign up to alerts to the latest changes in the fleet including contracts and deliveries (as well as sales, timecharters, and capital markets activity).
- Vessel register: a range of details on every ship in the Clarksons Research vessel database.

Fleet, Shipbuilding and Fixture Data

- Our vessel register data comprises around 93,000 vessels. With Shipping Intelligence Network you have a powerful tool that allows you to access and cross reference a vast wealth of information about them.
- Vessel data: view full information available about individual ships including a sales and fixture history (for tankers and bulkers) and details on equipment. In addition there is a peer group analysis which pinpoints the number and characteristics (dimensions, flag, class, ownership, builder) of similar ships by type, size and age.
- Owner data: full lists of vessels currently owned and on order by individual owners, including key data about each ship. Data can also be accessed directly via an owners search function.
- Shipbuilder data: dynamic shipyard profiles, including full lists of vessels currently on order with each builder, as well as previously built ships, with key data about each vessel. Data can also be accessed via a builders search function.

- Listings of secondhand or demolition vessel sales, contracting of new orders and newbuilding deliveries.
- Fixtures: reported fixtures for tankers, bulkcarriers, gas carriers and containerships are available and can be accessed by month or year for each ship type or listed for each individual ship. They are also searchable by owner, charterer and load or discharge area.
- Sales & IPO: reported sales by vessel type and date, and company IPO and bond capital markets transactions by exchange and date.

Time-Series and Graphs

- Our time-series data stretches to thousands of spreadsheets, updated weekly and downloadable into Excel, each with an associated graph that can be cut and pasted into documents and presentations. The time-series data can be searched by ship type, market or type of content.
- Commercial data: spot freight rates and earnings, period rates, newbuilding, secondhand and demolition prices, all by ship type; choose your own frequency. Time-series indicating the volume of activity in terms of fixtures, secondhand sales transactions and newbuild contracts are also available.
- Fleet development time-series: fleet, orderbook, contracts, deliveries and demolition over time for all types, measured in numbers of ships and capacity.
- Shipbuilding data: orderbook, contracting and deliveries by ship type and by country/region of build in various relevant units.

- Seaborne trade and demand: including timeseries of all major seaborne trades in tonnes and tonne-miles as well as tables detailing the main commodity importers and exporters. Seaborne trade is also covered in-depth in our regular reports.
- Economic and financial data: including commodity prices (oil, bunkers, steel etc.), trade (oil, ore, coal, grain, containers), production (oil, steel), GDP, industrial production, exchange rates, interest rates.

Market Reports

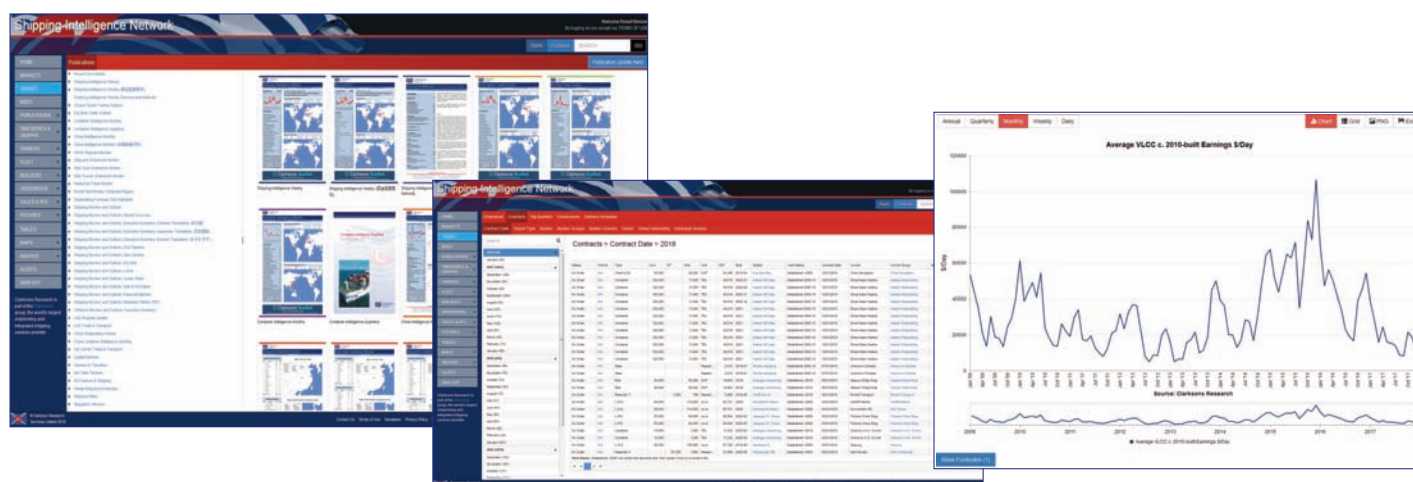
As soon as they are available Clarksons Research market reports are posted to Shipping Intelligence Network. These include key regular periodicals:

- Shipping Intelligence Weekly
- World Shipyard Monitor
- Dry Bulk Trade Outlook
- Oil Tanker Trade Outlook
- Container Intelligence Monthly
- Container Intelligence Quarterly
- China Intelligence Monthly
- China Shipbuilding Weekly
- China Container Intelligence Monthly
- Shipping Review and Outlook

as well as specialist reports including:

- LNG Trade and Transport
- Car Carrier Trade and Transport
- Seaborne Trade Monitor
- Capital Markets Monthly
- Environmental Regulation Review

Our well known market reports are available hot off the press in an easy to download format; users can access the whole publication, or just one or a few pages. An alert can signal when a new periodical is posted and there is also an archive for you to browse and reference. This alone makes Shipping Intelligence Network one of the best buys available in the shipping market.



To subscribe contact us on Tel: +44 (0)20 7334 3134
 Email: sales.crs@clarksons.com Website: www.crsi.com
 Register for a free trial at www.clarksons.net